

# **Our Lady of Mercy Catholic Education Trust**



## **St. Anthony's Girls' Catholic Academy**

### **Information about the school 2018 - 2019**

Web-site: [www.st-anthonys-academy.com](http://www.st-anthonys-academy.com)

e-mail: [enquiries@st-anthonys-academy.com](mailto:enquiries@st-anthonys-academy.com)

Twitter: St\_Anthonys3 (Main School)

Twitter: AAASixthForm (Post-16)

Twitter: BeaconSch (Teaching School)

Telephone: 0191 5658904



## **CONTENTS**

1. Interested in connecting or re-connecting with our community?
2. Introduction.
3. History and ethos.
4. Location and site.
5. Inspection/Reports/Awards 2000-2019.
6. Behaviour and Attendance.
7. Curriculum and examinations.
8. Extended/extra-curricular activities.
9. Partnership working.

### **OUTSTANDING**

IN

ALL FOUR OFSTED CATEGORIES 2013

- **Achievement**
- **Teaching and Learning**
- **Behaviour and Safety**
- **Leadership and Management**

### **OUTSTANDING**

IN

ALL THREE DIOCESAN CATEGORIES 2007, 2013 and 2018

- **Curriculum RE**
- **Catholic Life of the School**
- **Collective Worship**

## **1. Interested in connecting, or re-connecting, with our community?**

- **Student Admissions Enquiries Y7-Y11 (age 11-16)** – contact Mrs. J. Donaldson or Mrs. C. Donkin 0191 5658904 or visit [www.st-anthonys-academy.com](http://www.st-anthonys-academy.com)
- **Student Admissions Enquiries Y12-Y13 (age 16-18)** – see St. Anthony's and St. Aidan's Catholic Sixth Form website [www.aasixthform.com](http://www.aasixthform.com)
- **Teacher Training** – see Beacon Teaching School section of St. Anthony's website [www.st-anthonys-academy.com/beaconta](http://www.st-anthonys-academy.com/beaconta)
- **Staff Vacancies** – see academy website [www.st-anthonys-academy.com](http://www.st-anthonys-academy.com) and Schools North East Jobs Board [www.jobsinschoolsnortheast.com](http://www.jobsinschoolsnortheast.com)
- **Alumni Network** – contact [www.futurefirst.org.uk](http://www.futurefirst.org.uk)

## **2. Introduction.**

St. Anthony's is an 11-18 Roman Catholic Academy for girls serving the community within the City of Sunderland. It is part of Our Lady of Mercy Education Trust (a multi-academy trust which includes St. Aidan's and St. Anthony's). The academy works closely with its partner school St. Aidan's Catholic Academy and there are joint post-16 arrangements across both schools.

There are c.97 teaching staff (full time and part time) and c. 70 support and administration staff (some full time and some part time) at St. Anthony's.

The majority of the students and staff are from the R.C. faith tradition, given the ethos of the school, but applications are invited from staff and girls of other faiths, and none, who are happy to learn and work within a Christian environment and join in all with all aspects of life in our community.

The wide catchment area, which covers the whole of the City of Sunderland, provides a genuinely comprehensive intake. Pupils attending the school come from very varied backgrounds. Many parents in neighbouring authorities seek to have their daughters educated at the academy due to its inclusive nature and often due to family connections. Sometimes three or four generations have been educated at the school since its inception in 1904.

## **3. History and ethos.**

The school was founded by the Sisters of Mercy during the 19<sup>th</sup> century and has a fundamental commitment to high quality education for girls. The academy is supported in its work by Chaplain, Sr. M. Josepha. The Chaplaincy Office is situated adjacent to the School Chapel which is often the venue for weekly Mass, retreat days, opportunities for reflection and many smaller scale liturgical activities. In 2004 the school celebrated its centenary as a secondary school with sixth form. The school has over one hundred years experience as a provider of Sixth Form education for girls.



### **Rome Pilgrimage**

#### **4. Location, site and facilities.**

The school is situated in the centre of Sunderland within walking distance of train, metro and bus stations. It is a state of the art new school situated within a garden site within a conservation area. The school buildings consist of some listed Victorian buildings and some brand new buildings. All academy buildings have either been rebuilt or refurbished during the last six years with over £20m being spent in capital investment during this period.

#### **2017**

- Refurbishment of Somerleyton House
- New Drama Studio
- Landscaping and grounds around Somerleyton House due for completion

#### **2016**

- New Chapel
- New Chaplaincy Room
- New four court Sports Hall
- New Dance Studio
- New Changing Rooms
- New Multi-games area
- Four new ICT facilities
- Refurbished Student Support Area, “The Cottage”
- New Medical Room
- New admin. areas
- Access, security and car parking arranged to make best use of the site footprint

## **2015**

- New Hall
- Major investment in a new stage lighting and sound system
- New Library/Learning Resource Centre
- Thirty new classrooms with new furniture and new storage facilities
- Interactive touch screen technology in all new and refurbished teaching areas
- New Administrative areas
- New Catering Kitchen
- New Dining Room
- Twelve new Science laboratories and associated prep. rooms
- Ten new Art, Technology/ICT specialist rooms
- New student and staff washrooms/toilet facilities

## **2012**

- The Educare Centre – an immersive environment using edge-blending technology
- Eight new classrooms

## **2010**

- Three new Music/Performance rooms
- Three new classrooms
- Wi-fi across all the new site

## **5. Key Inspection/Reports/Awards 2009-2019.**

### **2019**

- The Sunday Times Parent Power North East (11<sup>th</sup>).
- World Class School Nomination.

### **2018**

- ISM (Incorporated Soc. of Musicians) Bronze Music Award.
- Silver School Games Award.
- International School Foundation Award.
- Outstanding in all three categories Diocesan Inspection:
  - Curriculum RE;
  - Collective Worship;
  - Catholic Life.

### **2017**

- Top 100 state school for the English Baccalaureate (top 5% in the country).
- Gold School Games Award.
- ISM (Incorporated Soc. Of Musicians) Bronze Music Award.

### **2016**

- Awarded, for a third time, the Basic Skills Quality Mark.
- ISM (Incorporated Soc. Of Musicians) Bronze Music Award.

### **2015**

- Top 100 state school for the English Baccalaureate (top 5% in the country).
- ISM (Incorporated Soc. Of Musicians) Bronze Music Award.

## 2014

- National Teaching School Status.
- Expert Centre for Global Learning.
- HT became an NLE (National Leader of Education).
- The school became a National Support School.
- 11 SLE's (Specialist Leaders of Education) and 1 NLE (National Leader) with NCTL (National College for Teaching and Learning).
- Silver School Games Award.

## 2013

- Outstanding in all three OfSTED (Section 5) categories.
- Outstanding in all three Diocesan (Section 48).
- Awarded, for a second time, the Basic Skills Quality Mark.

## 2012

- Teacher Learner Academy status – recognised as a verifier for teacher training projects within the school and partner schools.

## 2011

- The school joined the Leading Edge community following the achievement of High performing Specialist School status.

## 2010

- Recognised as a Teacher Learner Academy by the GTC (General Teaching Council).
- Awarded the Basic Skills quality mark for Literacy and Numeracy provision.
- The School Food Trust School of the Month.

## 2009

- Awarded a second Language Specialism by the SSAT (Specialist School and Academies Trust) The only school in the city to have two specialisms.
- Awarded High Performing Specialist School status by the SSAT (Specialist Schools and Academies Trust).
- Recognised as a Teaching and Learning Academy by the G.T.C. (General Teaching Council).
- Awarded Outstanding by OfSTED for the Technology SCITT (School Centred Initial Teacher Training) programme run in conjunction with Northumbria University.

### **6. Behaviour and attendance.**

Expectations with regard to pupil behaviour are high and the pastoral care of pupils is a strength. In the 2013 OfSTED rated behaviour as “**Outstanding**” and the 2007 OfSTED stated the behaviour of students was described as “**Exemplary**”. Attendance is routinely 95% and punctuality is excellent and highly valued.

### **7. Curriculum, examinations and entrance into the “world of work” or higher education.**

The school sets high academic standards and has a strong commitment to the delivery of a broad and balanced curriculum. Over twenty subjects are offered at GCSE and over thirty at Advanced level.

Routinely a small number of the most able students are offered Oxbridge places and between about a fifth or a quarter of students in the last three years have obtained places at either Russell Group universities or the most prestigious Scottish universities (often requiring straight A grades or a number of A\*/A grades at A level during the last five years).

Retention rates are usually c.90% and entry to Higher Education has been between 80 - 90% routinely during the last decade.

### **8. Extended/extra-curricular activities.**

Pupils also enjoy a wide range of extra-curricular activities. There are over one hundred and fifty groups and individual meetings each week ranging from Ski Club with an attendance of up to eighty to small one to one groups preparing for examinations. Many girls and teams perform in sports at local and sometimes national and international level. There are very high participation rates in sporting and other extended curricular activities.

Hundreds of educational visits take place ranging from voluntary work in Ecuador, John Paul II Award Scheme and the Duke of Edinburgh Award Scheme to local and national History or Art visits to name just a few.

A summer school programme, specialising in Technology, for students transferring from Y6 and KS3 pupils takes place during the first week of the summer holidays each year. There is also an Extended Schools programme for primary children which includes crafts, jewellery making etc.

Pupils are encouraged to be active citizens and take part in local events, charitable fund raising and volunteering as well as competing in local and national competitions.

The thriving Music department has undertaken Music tours Prague (2007), Dublin (2008), Cracow (2009), Rome (2010), Paris (2011), Oxford, Blenheim, Highclere and Magdalen College (2012), Venice and Verona (2013), Salzburg (2014) Paris (2015), London (2016) and Paris (2017).

The department has also presented highly successful productions of, "Joseph"(2013) "Oliver" (2014) ,"Into the Woods" (2015), "Calamity Jane" (2016), "Songs from the shows"(2017), "The Sound of Music" (2018) and "Guys and Dolls" (2019).





**Ski Club**

**10. Partnership working to enhance opportunities for girls and staff:**

- the school is an Expert Centre for Global Learning;
- the school is a member of the Leading Edge community;
- the school is a member of the Diocesan Secondary HT's Partnership;
- the school is involved in a NCTL/Diocesan training for school leaders;
- the school is a member of Monkwearmouth Catholic Partnership;
- the school is also a member of the Together for Children Education Partnership, local networking groups at all levels and Schools North East;
- The school has many international partnerships (see below).

**a) City-wide partnership:**

**i) Monkwearmouth Catholic Partnership:**

2 secondary schools:

- St. Aidan's
- St. Anthony's

9 primary schools:

- St. Mary's - Meadowside
- St. Joseph's - Millfield
- St. Leonard's - Silksworth
- St. Patrick's - Ryhope
- St. Cuthbert's - Grindon
- St. Anne's - Pennywell
- St. Benet's - Fulwell
- English Martyrs - Red House
- St. John Bosco - Town End Farm

ii) **City of Sunderland Secondary Headteachers'** and other local authority meetings, forums etc.



## **b) Regional partnership:**

**i) Beacon Teaching School Alliance** – St. Anthony’s was awarded Teaching School status from September 2014. This involves the academy in leading Beacon Teaching School Alliance. We are part of a network of North East Teaching schools who provide:

- Initial Teacher Training
- Continuing Professional Development
- School to School Support
- Research and Development

## **ii) Diocese of Hexham and Newcastle:**

Diocese of Hexham and Newcastle web site: [www.rcdhn.org.uk](http://www.rcdhn.org.uk)

Education Service Diocese of Hexham and Newcastle; [www.edursdhn.org.uk](http://www.edursdhn.org.uk)

Diocesan Director: Mrs. Deborah Fox.

## **iii) Diocesan Youth Village/Diocesan YMT (Youth Ministry Team):**

[www.ymt.org](http://www.ymt.org)

## **iv) Schools North East:**

[info@schoolsnortheast.com](mailto:info@schoolsnortheast.com)

A forum consisting of schools of all types across the North East of England. The Headteacher is a Board member of SNE and the school is a partner school.

## **v) Local, national and international universities:**

The school has connections with universities across the country and in particular very strong links with our five local universities:

- University of Sunderland;
- Durham University;
- University of Newcastle;
- University of Northumbria and
- University of Teesside.

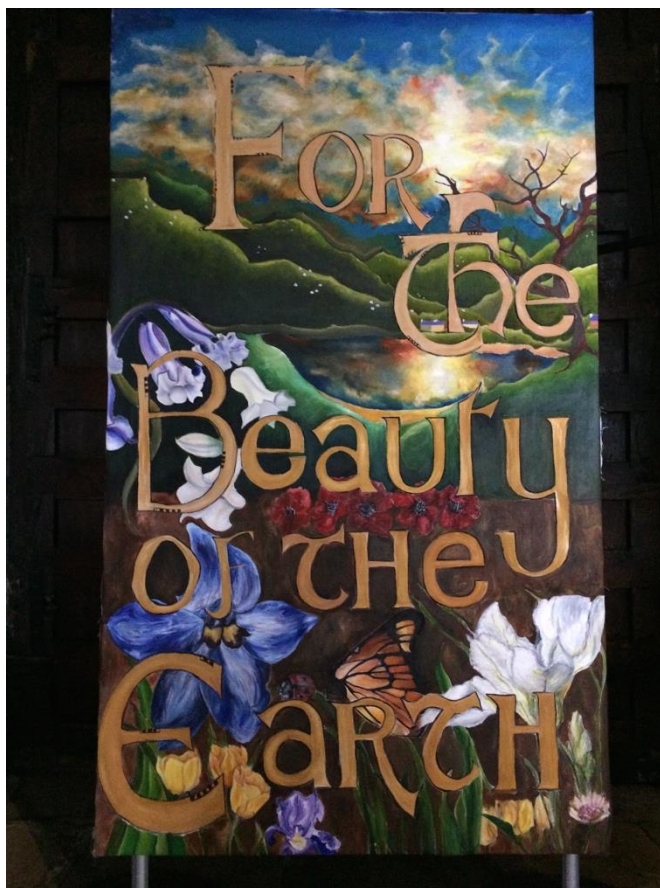
Girls annually travel to over thirty universities to study over thirty different subjects. Girls have occasionally undertaken academic and sporting scholarships to the USA eg. Bryn Mawr to study Languages. A small number of particularly able students will also annually apply to Oxbridge and very prestigious courses in a whole host of other universities which require the highest grades.

## **c) National partnership:**

- **CATSC** (Catholic Association of Teachers, Schools and Colleges) : [www.catsc.org.uk](http://www.catsc.org.uk)
- **CESEW** (Catholic Education Service England and Wales): [www.cesew.org.uk](http://www.cesew.org.uk)
- Links via the Diocesan YMT (Youth Ministry Team) to **CYMFED** (Catholic Youth Ministry Federation): [www.cymfed.org.uk](http://www.cymfed.org.uk)
- Association of Maintained Girls’ Schools
- **SSAT** (Specialist Schools and Academies Trust): [www.ssat.org.uk](http://www.ssat.org.uk)
- **Leading Edge** (A Specialist Schools and Academies Trust) Partnership programme: [www.ssat.org.uk](http://www.ssat.org.uk)

**d) International partnership:**

- **Sweden** (2003 - present) University of Linnaeus ITT - English Language, training ITT students, lecturing in Vaxjo and Kalmar etc.
- **Swaziland** (2007 - present) Manzini Youth Care - Child centred practice, literacy, PHSE, charitable fundraising and project delivery
- **India** (2010 - present) British Council funded project KVKV School Rajkot and Panshil School Rajkot - education, annual staff and student exchanges
- **China** (2011 - present) – languages, Mandarin Club, Confucius classroom development, Daquin Language School Exchange and No.69 Middle School Harbin.



**St. Anthony's exhibit - Catholic Partnership Art Exhibition**

**Blessing of St. Anthony's Academy – 14<sup>th</sup> July 2017**

Bless this school  
and those who built it  
for the education  
of our young people.

Bless our students and staff,  
our parents, governors,  
parishioners and all who promote  
education in our community.

May this school always be  
a home of mercy and goodwill,  
so that together we can build  
your kingdom of mercy,  
justice and peace.  
Amen.